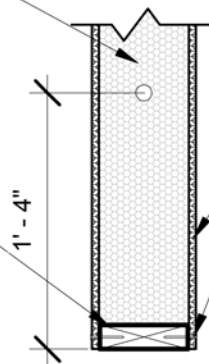


1" FACTORY
INSTALLED
ELECTRICAL CHASE
VERIFY LOCATIONS
WITH ARCHITECT

INSTALL SEALANT
BEADS EACH SIDE
AND TOP PRIOR
TO CONNECTION



SIPS WALL

2x NAILED/STAPLED
@ 6" O.C. BOTH SIDES
IN EACH ROUTED
PANEL END

(SECTION VIEW)

NOTE: IF BOTTOM PLATE IS
FIELD INSTALLED, SLIGHTLY
CHAMFER TOP OF BOTTOM
PLATE FOR EASE OF
CONSTRUCTION

1 TYP. PANEL EDGE
D11 1" = 1'-0"



EARTHCORE SIPS
1005 S. 120th
LAFAYETTE, CO 80026
888.299.3049
www.earthcoresips.com

This document is an instrument of
service, and as such, remains the
property of EarthCore SIPS.
Permission for use of this document
is limited and can be extended only
by written agreement with EarthCore
SIPS. COPYRIGHT 2011