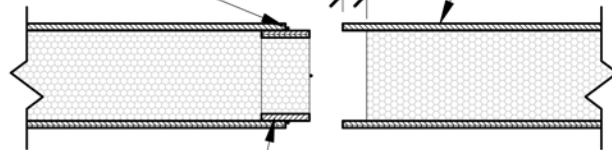


CONTINUOUS  
SEALANT, 3  
SIDES, TYP.

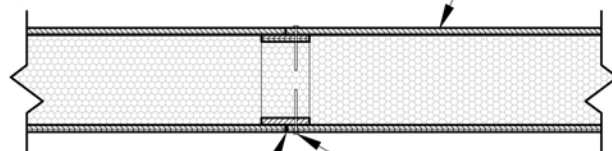
1 1/2"

SIP PANEL



SPLINE PREINSTALLED AS TONGUE  
USING 3" WIDEXSECTION OF 7/16"  
OSB EACH FACE OF CORE, MATCH  
SIP OSB PROPERTIES.

SIP PANEL



1/8" GAP, TYP..

NAIL OR STAPLE SIP TO SPLINE  
WITH 8d @ 6" O.C. EACH SIDE  
OPTION: FASTEN WITH #6 TYPE  
"S" DRYWALL SCREWS @ 6" O.C.

TYPICAL TONGUE AND GROOVE CONNECTION



TYP. PANEL CONNECTION

1" = 1'-0"



EARTHCORE SIPS  
1005 S. 120th  
LAFAYETTE, CO 80026  
888.299.3049  
www.earthcoresips.com

This document is an instrument of service, and as such, remains the property of EarthCore SIPS. Permission for use of this document is limited and can be extended only by written agreement with EarthCore SIPS. COPYRIGHT 2011