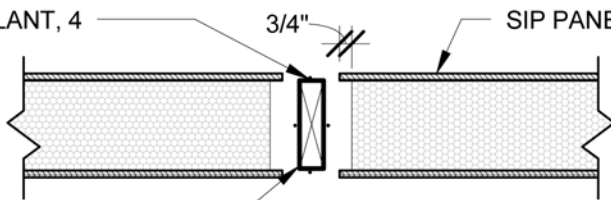
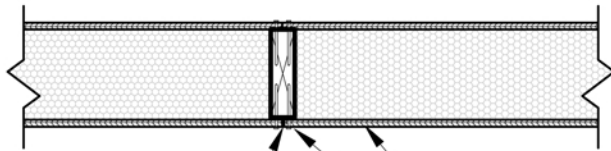


CONTINUOUS SEALANT, 4 SIDES, TYP. 3/4" SIP PANEL



SPLINE USING 2x DIMENSIONAL LUMBER



1/8" GAP, TYP..

NOTE: VAPOR RETARDER RECOMMENDED ON WARM SIDE OF PANEL IN CLIMATES WHERE RETARDERS ARE CALLED OUT BY LOCAL CODE

NAIL OR STAPLE SIP TO SPLINE WITH 8d @ 6" O.C. EACH SIDE STAGGERED  
OPTION: FASTEN WITH #6 TYPE "S" DRYWALL SCREWS @ 6" O.C.

1 PANEL CONNECTION WITH WOOD  
D14 1" = 1'-0"



EARTHCORE SIPS  
1005 S. 120th  
LAFAYETTE, CO 80026  
888.299.3049  
www.earthcoresips.com

This document is an instrument of service, and as such, remains the property of EarthCore SIPS. Permission for use of this document is limited and can be extended only by written agreement with EarthCore SIPS. COPYRIGHT 2011